

The Mining sector in Mozambique

November, 2025

Elaborated by:



Impressum

Publisher:

Federal Institute for Geosciences and Natural Resources (BGR)

Authors:

Federal Institute for Geosciences and Natural
Resources (BGR) in Mozambique
Chamber of Mines Mozambique (CMM)

Project:

German-Mozambican Technical Cooperation Project:
„Responsible commodity supply chains and sustainable
production in Mozambique’s mining sector“

Cover image: © Kenmare, Heavy Mineral Sands Processing Site in
Northern Mozambique

Date: November 2025

DOI: <https://doi.org/10.25928/mi25-mozq>

The Mining sector in Mozambique

Main minerals - key players - economic data - opportunities for investors

Violeta Bunzula, BGR

Stela Buque, CMM

Katharina Schnell, BGR

Holger Hey, CMM

Maputo, November 2025

Content

Foreword	7
Development of Mozambique’s Mining Industry	8
Regulatory Framework for Mineral Rights	10
Economic Data	11
Most important mineral deposits and Key players: Opportunities in the Natural Resources Sector	13
Gold	14
Graphite	15
Heavy Mineral Sands	17
Aluminium	19
Metallurgical and thermal coal	19
Pegmatite	20
Lithium	22
Rare Earth Elements	23
Ruby	24
Artisanal and Small-scale Mining in Mozambique	25
Human rights, environmental protection and occupational health and safety in Mining	27
References	30
Appendix	31
An overview of the minerals deposits and the largest companies operating in the area	31
Federal Institute for Geosciences and Natural Resources (BGR)	32
Chamber of Mines of Mozambique	33
State institutions of the mining sector	34

Foreword

Chamber of Mines of Mozambique (CMM) and Federal Institute for Geosciences and Natural Resources (BGR), German Cooperation Partners in Mozambique's Mining Sector

Dear reader,

We are glad to present our overview about Mozambique's mining sector to you.

Possible investors will find current information about Mozambique extractive industry and the most important minerals that are produced in and exported from Mozambique, as well as the key players of each field. Please feel free to contact CMM in case of questions: www.cmm.org.mz/en - we will be happy to find your business opportunity!

In addition to information on the mining sector in Mozambique, our brochure also provides interested members of the public with an insight into the work of German Cooperation in minerals export control, small-scale mining, human rights, and the promotion of environmental protection and occupational health and safety.

For more information, scan this QR-code:



Development of Mozambique's Mining Industry

Mozambique has a mining tradition that spans over a millennium, historically known for the gold trade with Arab and Persian merchants. Today, the country's diverse geological framework is well known for its abundance of hydrocarbons, especially liquefied natural gas (LNG) and mineral resources. These include graphite, titanium minerals, rubies, gold, lithium-minerals and many more. These mineral deposits are distributed throughout the country, with the northern and central regions hosting the highest concentrations.

The mining sector in Mozambique has experienced significant transformation in recent years. The enactment of the Mining Law in 2002 represented a landmark development in the country's regulatory framework. This legislation was subsequently replaced by Mining Law No. 20/2014 in 2014, which established a more favourable and transparent legal environment for both domestic and international investors.

The regulatory framework has continued to evolve through ongoing refinements. In 2025, a comprehensive review was initiated, encompassing Mining Law No. 20/2014, Petroleum Law No. 21/2014, and the Local Content Law. Furthermore, the proposal of the Regulation on Concessions and Universal Access Fees (TAU), pursuant to the Electricity Law (Law No. 12/2022, dated 11 July), forms part of this extensive review process. These legislative updates underscore the Government's commitment to aligning its regulatory regime with international best practices and the dynamic needs of the sector.

The country has signed several international treaties, including the Extractive Industries Transparency Initiative (EITI), the Kimberley Process, and the International Labour Organization (ILO) conventions, all of which contribute to foster a more transparent, ethical, and stable environment for mining activities in Mozambique.



Heavy Mineral Sands Processing in Northern Mozambique (Source: Kenmare)

Regulatory Framework for Mineral Rights

Mineral rights in Mozambique are granted either by the Ministry of Mineral Resources and Energy or by the relevant provincial governor, depending on the nature and scope of the mining activity. These rights are granted through official licences or contractual agreements in accordance with the Mining Act and the associated regulations.

Under the current legal framework, Mining Law 20/2014, of 18 August 2014, mineral rights may be granted through the issuance of the following types of mineral titles ¹:

- **Prospecting and Exploration Licence:** Authorizes preliminary geological investigations and exploration activities.
- **Mining Concession:** Grants the holder the right for extraction, treatment, processing and disposal operations of mineral products.
- **Mining Certificate:** A simplified title that allows small-scale or artisanal miners to legally extract minerals. It is exclusively designed to support local mining operations with limited technical or financial capacity.
- **Mining Pass:** This is also intended exclusively for artisanal and small-scale miners. It allows the holder to extract and transport certain quantities of minerals. It is typically valid for a short period and limited in scope.
- **Mining Handling Licence:** Authorizes the holder to engage in the storage, loading, unloading, or internal transportation of mineral products within a designated facility or area.

¹ African Mining Legislation Atlas

Economic Data

Mozambique has emerged as a significant player in the global graphite and coal markets, exporting to India, USA, China, and countries in Europe. The discovery of heavy mineral sands enriched in ilmenite, zircon, and rutile, along with lithium-bearing minerals in pegmatite deposits has further diversified the mining sector and increased its strategic importance.

The Mozambican economy sustained a strong recovery trajectory from 2021 through 2023, marked by significant growth in gross domestic product (GDP). This positive trend was largely driven by the robust performance of the extractive sector, particularly the production and export of liquefied natural gas (LNG), which played a central role in boosting economic activity and foreign exchange earnings.

The country's economy experienced a decline in gross domestic product in 2024, largely due to social protests, as well as extreme climate events that affected agricultural output. Growth is projected to recover to 3.0% in 2025 as social conditions and economic activity stabilize.

Table 1: Economic growth 2021 – 2026, according to World Bank and Banco de Moçambique ^{2, 3}.

Year	2021	2022	2023	2024	2025f	2026f
Real GDP growth (%)	2.4	4.2	5.4	1.8	3.0	3.5
Private consumption	5.8	7.2	9.1	-6.0	3.9	5.4
Gross fixed capital investment	0.7	23.8	-43.0	26.7	6.3	7.4
Exports, goods and services	7.5	26.5	-5.3	-3.0	2.0	3.0
Imports, goods and services	2.8	30.9	-25.2	-1.5	3.0	5.0
Agriculture	3.4	5.5	3.8	1.9	2.4	4.2
Industry	1.7	4.6	13.8	3.0	2.7	4.1
Services	2.1	3.7	3.1	0.9	3.6	2.7

Notes: f = forecast. Data in annual percent change unless indicated otherwise.

According to the World Bank, the account deficit fell slightly from 13% to 12% of GDP between 2023 and 2024. It is expected to remain at around 12% between 2025 and 2027, due to the balance of rising exports of graphite, heavy sands concentrates, coal, and gas, and increased imports of equipment for mining and LNG megaprojects ⁴.

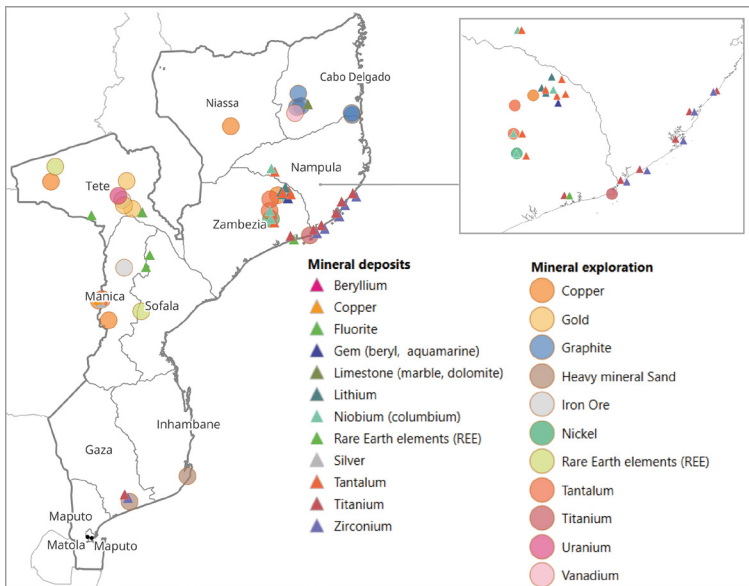
² The World Bank. Macro poverty outlook

³ Banco de Moçambique. (2021) Annual Report

⁴ Savannah Resources PLC. (2019) Annual Report and Financial Statements

Most important mineral deposits and Key players: Opportunities in the Natural Resources Sector

Mozambique is emerging as a significant player in the global commodities market, owing to its vast reserves of natural resources. The country hosts internationally important deposits of graphite, rubies, ilmenite, coal (high-grade coking coal and thermal coal), and LNG. In addition to these globally traded commodities, Mozambique also possesses a diverse range of mineral resources of national and regional significance. These include apatite, marble, bentonite, bauxite (the principal ore of aluminium), copper, gold, tantalum, gemstones (beryl, tourmaline), lithium-minerals, gravel, niobium, quartz, salt, sand, and stone (crushed and dimension stone).



The Regional Distribution of the Mozambican mineral-bearing Deposits and Occurrences (Source: S. Lächelt)

Gold

Mozambique is richly endowed with significant gold deposits, mainly located in the central and northern provinces. Manica Province has long been recognized as the traditional hub of gold production, with a strong history of mining activity. In recent years, growing global demand and the discovery of new deposits have driven the expansion of mining operations into Tete and Niassa. The country's gold mining sector now features a mix of artisanal and small-scale miners alongside established international and regional mining companies.



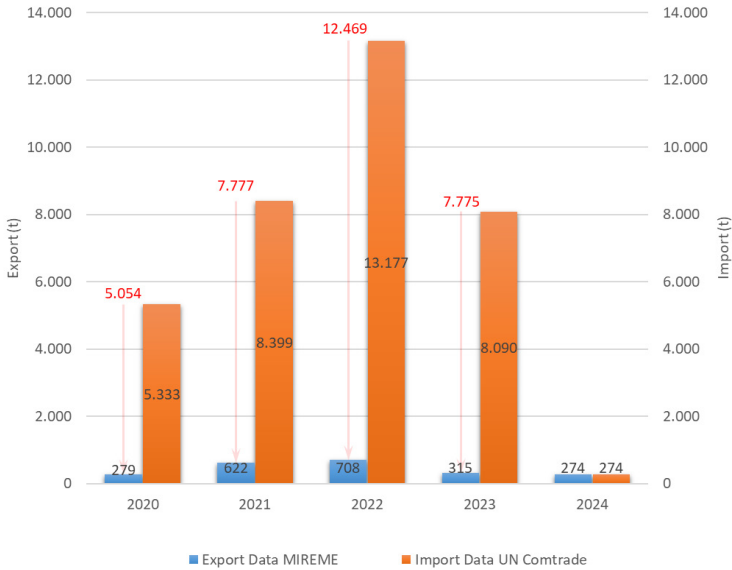
*Artisanal gold washing
(Source: INAMI)*

Gold production in Mozambique has experienced notable growth in recent years as a result of the progressive control of mining activities. In **2021**, the government recorded an output of approximately **764 kilogrammes**⁵. In **2022**, gold production rose significantly to around **1.300 kilogrammes**. The upward trend continued in **2023**, reaching a record high of over **1.700 kilogrammes**⁶. Although gold production has grown exponentially over the years, the reported numbers are not representative, because the official statistics do not consider smuggled gold.

The real numbers are difficult to assess, but according to international trade statistics, gold production is likely to amount to around **10 tonnes**, mainly from ASM operations.

⁵ MIREME (2023). Extractive Industry Statistical Report 2021 – 2022 (2nd ed.)

⁶ MIREME (2023). Extractive Industry Statistical Report 2022 – 2023 (3rd ed.)



A Comparative Analysis of Gold Export Data Reported by MIREME and Import Data Reported by Destination Countries (Source: MIREME and UN Comtrade).

Graphite

Graphite is essential in the production of anodes for lithium batteries for electric vehicles, placing Mozambique in the global spotlight, making it the third-largest graphite producer globally with an additional significant potential. According to Benchmark Mineral Intelligence, Mozambique currently supplies **10% of the world graphite**. This share is projected to rise to 15% by the end of the decade, driven by both the quality and abundance of the country's reserves.

The graphite production in Mozambique shows a strong increase since 2020, which was interrupted in 2023 due to international

overcapacities in the graphite sector and in 2024 due to unrest in Mozambique following the 2024 elections.

Balama graphite deposit

A key contributor to Mozambique's graphite output is the Balama graphite deposit in Cabo Delgado, operated by Twigg Exploration and Resources, a subsidiary of the Australian company Syrah Resources. The Balama graphite reserve is the largest globally, has an estimated of **110 million tonnes of graphite ore** with an average grade of **16% of total graphitic carbon (TGC)**, and additional **1.04 billion tonnes** of graphite mineral resources with an average grade of **12% of TGC** ⁷.

Mustang's Caula graphite project

Mustang's Caula project in Cabo Delgado is located near Syrah Resource's Balama mine. According to studies, the Caula deposit hosts a Joint Ore Reserves Committee (JORC)-measured vanadium-graphite resource of approximately 22 million tonnes at an average grade of 13.4% total graphitic carbon (TGC), this equates to **2.93 million tonnes of contained graphite**. Additionally, the deposit contains 0.37% Vanadiumpentoxide. The graphite is considered high quality, with consistent high-grade mineralization across the deposit ⁸.

Balama North graphite deposit

Triton Minerals is running the Balama North graphite and potentially vanadium project, currently approaching feasibility stage. The Balama North area has been explored by the current owner Triton Minerals since 2013. It is located some 10 km north of Syrah Resources' high-grade, high-tonnage Balama graphite mine. The estimated resources for the Nicanda Hill part of the deposit are **1,430 Mt with a graphite grade of 11.1 %** and a vanadium grade of 0.3 % Vanadiumpentoxide ⁹.

⁷ <https://www.syrahresources.com.au/our-business/balama-graphite-operation>

⁸ <https://www.edisongroup.com/research/focusing-in-on-caula-graphite-and-vanadium-2>

⁹ <https://tritonminerals.com/projects/balama-north>

Heavy Mineral Sands

Mozambique benefits from a coastline of approximately 2700 kilometres, characterized by extensive deposits of heavy mineral sands with considerable economic potential. These deposits contain industrial minerals, including rutile, ilmenite and zircon. The country is the world's **second largest producer of titanium dioxide (TiO₂) feedstock, contributing 20% of global production** ¹⁰.

Ilmenite and rutile, the principal titanium minerals, constitute essential feedstock for the production of titanium dioxide (TiO₂) pigment, which is extensively utilized in the manufacture of paints, plastics, and coatings. Furthermore, these minerals are indispensable in the manufacture of titanium metal and welding electrodes, underscoring Mozambique's strategic role within global supply chains for advanced materials.

Moma

Kenmare Resources Plc, which operates the Moma heavy mineral sand project in Nampula province, is one of the world's largest and most significant heavy mineral sands deposits.



Heavy Mineral Sands deposits, Moma (Source: INAMI)

¹⁰ World Mining Data <https://www.world-mining-data.info/wmd/downloads/PDF/WMD%202025.pdf>

As of 2024, the estimated total ore reserves in the Namalope, Pilivili, and Nataka mining concessions are approximately **1.4 billion tonnes** of ore. These contain average grades of 2.6% ilmenite, 0.16% zircon, and 0.05% rutile. These reserves translate into approximately **36.5 million tonnes of ilmenite, 2.3 million tonnes of zircon, and 0.75 million tonnes of rutile**, positioning Moma as a leading global supplier of these industrial minerals.

Table 2: Production of heavy mineral sand mine in Moma, Nampula province¹¹

Production (t)	2021	2022	2023	2024
Ilmenite	1,119,400	1,088,300	986,300	1,008,900
Zircon	56,300	58,400	51,100	50,500
Rutile	8,900	8,900	8,400	9,800
Concentrates	43,900	45,900	45,700	43,000
Total finished products	1,228,500	1,200,800	1,091,500	1,115,300

Mutamba/Jangamo

The Mutamba Project is located in the Gaza and Inhambane provinces of Mozambique in a world-class heavy minerals sands (HMS) area. This is part of a large area of heavy mineral deposits, which covers much of the South-Eastern African coastline.

Savannah Resources, through its subsidiary AME East Africa, holds the licence and has formed a joint venture (JV) with Rio Tinto. This venture combines Savannah's Jangamo project with nearby Rio Tinto's Mutamba project, which includes three deposits, Jangamo, Dongane,

¹¹ <https://www.kenmareresources.com/our-business/the-moma-mine/>

Ravene, and Chilubane, which are located about 180 kilometres southwest of the Mutamba project.

According to Savannah Resources annual report, The Mutamba Project, which includes the Jangamo, Dongane, and Ravene deposits, has a total estimated mineral resource of **4.4 billion tonnes**.

These resources have an average grade of **3.9% total heavy minerals (THM)**, which include valuable minerals such as ilmenite, rutile, and zircon. Within this, a high-grade section has been identified at the Ravene deposit, containing **92 million tonnes of ore with a higher concentration of 6.2% THM**. The estimate includes both indicated and inferred resource categories ¹².

Aluminium

A key asset in the country's aluminium value chain is the Mozal Aluminium Smelter, operated by South32 Ltd. Located near the capital city, Maputo, Mozal is the second-largest aluminium smelter in Africa and is recognized as one of the world's major aluminium exporters. The facility has a solid metal production capacity of **580 kilotonnes per year** ¹³. Mozambique has an emerging role in the global supply of aluminium by importing and processing alumina. Through this industry, Mozambique presents expanding opportunities for investment and growth in the metallurgical sectors.

Metallurgical and thermal coal

Located in the central province of Tete, the Moatize Mine stands as the most significant coal mining operation in Mozambique and one of the largest thermal and metallurgical coal projects in southern Africa.

¹³ www.south32.net/what-we-do/our-locations/southern-africa/mozal-aluminium

Strategically positioned, the mine plays a pivotal role in both regional and national energy and industrial supply chains.

In 2022, Mozambique's total coal production reached approximately **14.8 million tonnes**, comprising roughly 6.4 million tonnes of metallurgical coal and 8.4 million tonnes of thermal coal. In 2023, the annual production of thermal coal declined to 7.8 million tonnes¹⁴.

Pegmatite

A Pegmatite is a coarse grained rock that formed at the end of a crystallization event, usually after or during the emplacement of granitoids. Pegmatites can host high concentrations of rare and industrially valuable elements, including **lithium, beryllium, tantalum, niobium, tin, and rare earth elements (REEs)**. These formations are critical sources of strategic minerals essential for high-technology applications, energy storage, and green technologies.



Kaolinized Pegmatite, Alto Ligonha Pegmatite District (Source: Bunzula 2024)

The Alto Ligonha Pegmatite Field, located in the Alto Molocué district of Zambézia Province, is recognized as the most significant pegmatite field in Mozambique. Historically, this region has been a prolific producer of rare and industrial minerals, including lithium-bearing minerals, gemstones (such as beryl, kunzite, topaz, and tourmaline), as well as a range of rare metals including niobium and tantalum.

¹⁴ Ministry of Mineral Resources and Energy (2023). Extractive Industry Statistical Report 2022 – 2023 (3rd ed.)

Beryllium

Mozambique holds a strategic position in the global supply of critical minerals, particularly beryl, a key beryllium-bearing mineral. Between 2021 and 2024, the country has been placed as one of the five largest beryl producers with an average annual output of approximately **400 tonnes, representing approximately 6.0% of global production** ¹⁵.

Besides beryl being a globally highly demanded gemstone, beryllium is a high value material with critical applications across the energy, transport, and telecommunication industries, due to its exceptional thermal stability, and good conductivity.



Beryl (var. Morganite) from the Naipa deposit, Alto Ligonha pegmatite district (Source: Bunzula 2024)

Tantalum

Tantalum is a key material in modern technologies, especially in the production of micro-capacitors for electronic devices.

Mozambique currently produces approximately **200 tonnes of tantalite concentrate per year**, although the exact Ta₂O₅-grade is unknown and is estimated to range between 20-30%. Although the production is relatively modest compared to major



Mn-tantalite from Alto Ligonha pegmatite district in Zambézia province (Source: BGR)

¹⁵ <https://www.reportlinker.com/dataset/1baa8d20cca49b2e4c29746266e16ee5f38c3413>

global producers, the country possesses significant untapped geological potential for tantalum exploration.

In particular, the Alto Ligonha Pegmatite District hosts a variety of tantalum-bearing minerals. In addition to Fe-tantalite, some pegmatite deposits in the region also contain Mn-tantalite, which may have a higher tantalum content.

Lithium

The global drive toward decarbonization is accelerating the demand for lithium-ion batteries for electro-mobility and energy storage systems.



Lepidolite from Alto Ligonha pegmatite district in Zambézia province (Source: BGR)

Mozambique is emerging as a promising contributor to this growing demand, underpinned by a number of highly mineralized pegmatite deposits. In particular, the Muiane, Mutala, Morrua, and Marropino pegmatites, which host lithium-bearing minerals such as spodumene, lepidolite, and amblygonite-montebrasite.

Within the Alto Ligonha Pegmatite District, lepidolite samples are particularly enriched in lithium, with **concentrations reaching up to 2500ppm**, and are also characterized by elevated rubidium contents. In contrast, spodumene from the same region exhibits relatively low lithium concentrations, typically less than 5 wt.% Li₂O¹⁶.

¹⁶ Bunzula et al., The lithium mineralization potential of Pan-African pegmatites in Mozambique, 2025

Nevertheless, the lithium potential has not yet been totally assessed by modern industry standards. This is a great opportunity for future exploration.

Rare Earth Elements

Rare Earth Elements (REE) are a group of 17 specialty metals used in a wide array of high-growth industries, including electric vehicles (EVs), renewable energy (wind turbines), consumer electronics, advanced alloys, and ceramics. Some of the most sought-after REE are Neodymium, Praseodymium, Terbium and Dysprosium, collectively known as the “Magnet metals”.

Mozambique presents a compelling investment case with its REE resources primarily linked to carbonatites, pegmatites, and placer deposits. The currently most important asset is the carbonatite-hosted REE deposit at Mount Muambe in Tete province, operated by Monte Muambe Mining Lda.

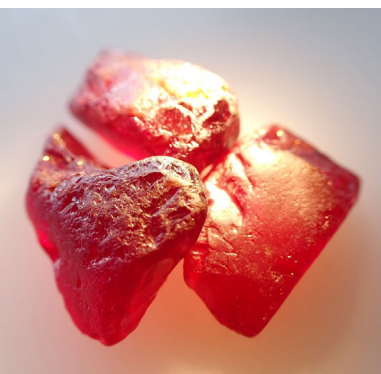
The project is in the prefeasibility stage and offers a projected annual production of **15,000 tonnes of Mixed Rare Earth Carbonate (MREC)** and an expected mine life of 18 years¹⁷. The scale and longevity of this operation positions it as a potentially strategically important supply source for critical minerals in the global market.

In addition to the carbonatite primary deposit, rare earth elements – bearing minerals, such as monazite, are produced as by-products from heavy mineral sands operations along the coastline of the Zambézia and Nampula provinces, contributing to Mozambique’s growing role in the global rare earths supply chain.

¹⁷ <https://altonare.com/monte-muambe-ree>

Ruby

Mozambique has emerged as a **leading global producer of rubies**, with mining operations primarily concentrated in the Montepuez region in the northeastern province of Cabo Delgado.



Ruby (Source: Montepuez Ruby Mining Lda)

The ruby supply chain in Mozambique is dominated by Artisanal and Small-scale Mining (ASM) alongside Montepuez Ruby Mining (MRM). The Montepuez Ruby Mining project, a joint venture between Gemfields (75%) and Mwriti Limitada (25%), anchors Mozambique's gemstone sector. **Between June 2014 and September 2024**, the project has generated over **1.2 billion US-Dollar in revenue from ruby auctions**, highlighting the project's critical role in the global gemstone market¹⁸.

Despite the persistence of illegal mining operations, Mozambique's total ruby production grew significantly from **2.7 million carats in 2023 to 3.9 million carats in 2024**, exceeding the national target of 3.0 million carats¹⁹. This strong performance underscores the sector's potency, operational scalability, and significant upside for investors.

With a rich geological endowment, a growing export market, and increasing demand for responsibly sourced gemstones, Mozambique offers compelling opportunities for investors seeking exposure to a high-margin, high-growth segment of the global gemstones mining industry.

¹⁸ <https://www.gemfieldsgroup.com/assets/montepuez-ruby-mining-limitada/>

¹⁹ Ministry of Mineral Resources and Energy (2023). Extractive Industry Statistical Report 2022 – 2023 (3rd ed.)

Artisanal and Small-scale Mining in Mozambique

Artisanal and Small-scale Mining (ASM) constitutes a significant component of Mozambique's mineral sector. It is a labor-intensive activity involving mineral exploration and processing, with approximately 250,000 individuals actively engaged across the country. ASM plays a vital role in livelihood diversification and poverty alleviation, providing essential income to a substantial number of households.

The sector also contributes meaningfully to employment beyond direct mining activities. When the entire value chain is considered including suppliers, traders, and associated services, **ASM is estimated to support up to 800,000 jobs nationwide.**



Informal Small Scale Mining, Zambézia Province (Source: INAMI)

Despite its socio-economic contributions, the ASM sector presents significant gender disparities. Women represent approximately 10% of small-scale miners, yet face notable barriers to full participation²⁰. These include limited economic opportunities and a lack of supportive infrastructure.

Addressing these challenges is critical for promoting inclusive and equitable growth in the sector.

Operationally, over 80% of ASM activities in Mozambique are conducted through open-pit mining typically employing simple manual tools. These conditions frequently result in unsafe working environments and pose serious health and environmental risks. The sector has been associated with considerable environmental degradation, including deforestation, wildfires, soil degradation and pollution due to mercury.

In response to these challenges, the Mozambican Government has established regulations to control small-scale mining activities. Under the current legal framework, small-scale mining operations are limited to an annual production of 12 kilogrammes of precious metals and operations on areas smaller than 120 hectares²¹. To initiate such operations, companies must secure both environmental and land-use licences.

In contrast, artisanal mining remains largely unregulated, with no comprehensive legal framework currently in place. Nevertheless, the Government is undertaking ongoing efforts to integrate informal mining groups into a regulated system. These efforts aim to improve transparency, environmental compliance, and community development, opening the door for responsible investment and sustainable growth in the mining sector.

20 Ministry of Mineral Resources and Energy Mozambique (2021). Census of Artisanal Mining

21 Nopeia, M., Mondlane, S., Takahashi, R., Jamal, D., Abdulgani, I., & Baptista, I. (2022).

In conclusion, while ASM continues to play an essential role in Mozambique's economy, its long-term viability depends on addressing environmental risks, improving labour conditions, formalizing informal operations, and ensuring inclusive participation, particularly for women. The ongoing reforms and policy initiatives provide a strong foundation for responsible investment and sustainable growth in the sector.

Human rights, environmental protection and occupational health and safety in Mining

Environmental, Social, and Governance (ESG), is an investing principle that prioritizes environmental issues, social issues (which means good relations with the neighboring communities and, ideally, their economic participation in the profits generated by the mining site, working conditions, human rights, work health and safety), and corporate governance. This 'social license to operate', which is especially related to the relations to neighbouring communities, is an important factor for the success of industrial-scale mining projects, worldwide and in Mozambique. ESG is supported and implemented by both the state and the private sector.

With the project 'Responsible commodity supply chains and sustainable production in Mozambique's mining sector', implemented by the Federal Institute for Geosciences and Natural Resources (BGR), German development cooperation is supporting the Ministry of Mineral Resources and Energy (MIREME) in regular awareness-raising campaigns in small-scale mining sites about the risks to people and the environment posed by mercury utilization in gold mining.

The small-scale miners receive information about alternative methods of gold extraction and how mercury can be used to a lesser extent

and in a way that is less harmful to health and the environment. In addition, alternative income opportunities for women are identified and promoted, e.g. in ceramics.

The Chamber of Mines of Mozambique (CMM) in cooperation with the Chamber of Commerce and Industry from Germany (IHK Chemnitz), and the Geological Mining Resources Inspection (IGREME), organizes mine rescue and first aid workshops for small-scale miners throughout the country. The initiative aims to build technical capacity, strengthen knowledge, improve workplace safety, and promote more responsible and sustainable mining practices. So far, workshops have been held in the provinces of Manica, Zambézia, and Tete, reaching hundreds of miners and local technicians.



Mine rescue and first aid workshop for small-scale miners in Tete (Source: CMM)

Post-mining rehabilitation is also playing an increasingly important role for mining companies. German development cooperation is supporting appropriate mine closure legislation in the BGR project. Safeguarding concepts for abandoned mine sites are being developed on a pilot scale and possibilities for subsequent use are being explored, e.g. to use open pits or safe underground mines as a museum and tourist attraction as well as a place of learning for schoolchildren, students and other interested parties.

References

T. W. BANK (2022). Macro poverty outlook.

B. D. MOÇAMBIQUE (2021). Annual Report, 2021.

SAVANNAH RESOURCES PLC (2019). Annual Report and Financial Statements, 2019.

S. LÄCHELT (2021). The Geology and Mineral Resources of Mozambique, 2nd ed., vol. Vol. II, Mozambique: Ministério dos Recursos Minerais e Energia

N. COWLING (2024). Bauxite production in Mozambique 2016-2022.

www.south32.net/what-we-do/our-locations/southern-africa/mozal-aluminium.

P. REPRESAS, C. PRAZERES, M. J. BATISTA, P. GONCALVES AND C. FORTES (2023). D9.3 - Mozambique case study.

M. NOPEIA, S. MONDLANE, R. TAKAHASHI, D. JAMAL, I. ABDULGANI AND I. BAPTISTA (2022). An integrated geoscience approach to effective formalization of artisanal mining in Mozambique: A case study of Namuno District, northeastern Mozambique.

M. G. (MIREME) (2021). Census of Artisanal Mining.

Appendix

An overview of the minerals deposits and the largest companies operating in the area

Commodity	Province	Company
Coal	Tete	<ul style="list-style-type: none"> Vulcan Mozambique SA Jindal JSPL Mozambique Minerals, Limitada Minas de Moatize Minas de Revobué
Construction Stone	Maputo Province	<ul style="list-style-type: none"> MIMOC - Minerais Industriais de Moçambique Namaacha Mining Limitada Riolitos, Limitada
Gold	Manica Zambézia Tete	<ul style="list-style-type: none"> Bengala Minas, Limitada Ouro Namuli, Limitada Changara Mines
Graphite	Cabo Delgado	<ul style="list-style-type: none"> GK Ancuabe Graphite Mine S.A. Twigg Exploration and Mining Limitada Suni Resources, S.A
Heavy Mineral sands	Gaza Inhambane Zambézia Nampula	<ul style="list-style-type: none"> Ding Sheng Minerals, SA Africa Great Wall Mining Development Company, Limitada Haiyu Mining Co., Lda Kenmare
Limestone	Maputo Sofala	<ul style="list-style-type: none"> G.S. Cimento, S.A.R.L China-Mozambique Cement & Mining Development Co. Limitada
Berilium	Zambézia	<ul style="list-style-type: none"> Euro Export, Limitada 3DI Heavy Minerals, Limitada Highland African Mining Company, Lda
Lithium		
Tantalum		
Rare Earth Elements	Inhambane	Mutamba Mineral Sands SA
Ruby	Cabo Delgado	Montepuez Ruby Mining

Federal Institute for Geosciences and Natural Resources (BGR)

The Federal Institute for Geosciences and Natural Resources (BGR) is a scientific and technical authority within the remit of the German Federal Ministry for Economic Affairs and Energy (BMWE).

As the central geoscientific research and advisory institution of the Federal Government and as the national Geological Survey of Germany, BGR carries out both statutory and legally mandated tasks. In addition, it fulfils numerous international functions, one of which is supporting the implementation of the project "Responsible Commodity Supply Chains and Sustainable Production in Mozambique's Mining Sector."

The aim of the project is to enable the government as well as civil society to control production conditions and exports in the mining sector and to sanction violations of environmental protection or human rights or to exert pressure through critical publicity in order to enforce human and environmentally friendly conditions.

Address:

BGR Mozambique - c/o Direcção Nacional de Geologia e Minas
Praça 25 de Junho, 380, 4º Andar – Porta 5 – Maputo – Mozambique

Email:

Postfach-B41@bgr.de

Website:

https://www.bgr.bund.de/responsible_supply_chains_mozambique

Chamber of Mines of Mozambique

The Chamber of Mines of Mozambique (CMM) is a formal private sector organization that aims to represent the interests of the entire mining sector in Mozambique. It serves as a key intermediary, facilitating effective communication and collaboration between the mining sector and the government.

The Chamber of Mines brings together 100 member companies that collectively employ over 10,000 Mozambicans, highlighting the sector's significant role in local content and economic growth in the country.

Address:

CMM - Avenida Kim Ill Sung n.º 1156, 1.º andar, Sommershield –
Maputo – Mozambique

Phone number:

(+258) 84 531 7144
(+258) 86 854 3210

Email:

info@cmm.org.mz

Website:

www.cmm.org.mz/en/



State institutions of the mining sector

Ministry of Mineral Resources and Energy (MIREME)

Government ministry responsible to lead national policy development and strategic oversight of Mozambique's mineral and energy sectors. It ensures alignment with economic growth, sustainability, and investment priorities.

National Institute of Mines (INAMI)

The regulatory authority for mining activities, responsible for issuing licences, monitoring compliance, and promoting sustainable development in the mining sector.

Kimberley Process Management Unit (UGPK)

This Institution is responsible for overseeing Mozambique's adherence to the Kimberley Process Certification Scheme, ensuring transparency and legitimacy in the trade of rough gemstones and gold.

Centre of Gemmology and Lapidary of Mozambique (CGL)

A government-supported institution that adds value to the gemstones supply chain through technical training, lapidary services, and certification of gemstone authenticity to support sector formalization.

Geological Mining Resources Inspection (IGREME)

Carries out inspections and controls activities across the extractive sector, focusing on legal compliance, operational safety, and environmental standards.

National Petroleum Institute (INP)

The regulatory body for upstream petroleum activities, managing licensing, exploration, production approvals, and sectoral policy execution.

National Hydrocarbon Company (ENH)

A state-owned enterprise representing government interests in oil and gas projects. ENH collaborates with international investors across the value chain, from exploration to commercialization.

Project:

German-Mozambican Technical Cooperation Project:
„Responsible mineral supply chains and sustainable
production in Mozambique’s mining sector“

Implemented by:

Federal Institute for Geosciences and Natural Resources (BGR)

In cooperation with:

Ministry of Mineral Resources and Energy (MIREME)

Commissioned by:

Federal Ministry for Economic Cooperation and Development (BMZ)

Contact:

Federal Institute for Geosciences and Natural Resources (BGR)
Stilleweg 2
30655 Hannover
Germany